

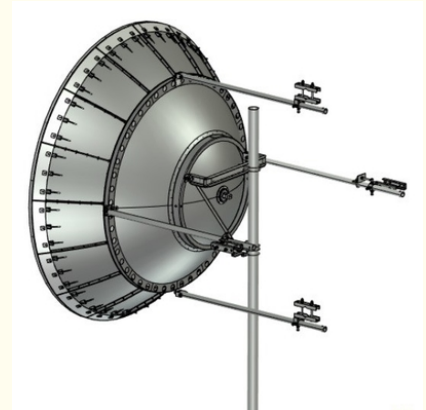


2.4m / 8ft Class 3 Microwave Parabolic Antenna Dual Polarized 7.125 Ghz

Our Product Introduction

Basic Information

- Place of Origin: China
- Brand Name: Famous
- Certification: CE ISO9001
- Minimum Order Quantity: 1 SET
- Price: Negotiable
- Packaging Details: Standard export packaging/customizable packaging
- Payment Terms: T/T L/C



Product Specification

- Highlight: 2.4 m microwave parabolic antenna,
8 ft microwave parabolic antenna,
7.125 Ghz dual parabolic antenna



More Images



for more products please visit us on mw-antenna.com

Product Description

2.4m/8ft Class3 Dual-Polarized Antenna

- Our patent split-lobe microwave communication parabolic antenna for large diameter, which can save packaging and transportation costs greatly without any quality compromised
- High Performance ETSI Class 3 & US FCC 101 compliance parabolic antennas with exceptional front/back ratio – Excellent performance for a wide range of applications
- Simple Assembly – Minimal required assembly simplifies installation on site and guarantees “factory-tested” quality

Electrical performance:

2.4m/8ft ultra high XPD dual-polarized microwave parabolic antenna specification

Antenna Model	Antenna Size(m/ft)	Frequency (GHz)	Gain(dBi)			3dB BW (deg)	XPD (dB)	VSWR	F/B ratio (dB)	ISO
			Low	Mid	Top					
CMP243DC	2.4m/8ft	3.6-4.2	36.1	37.3	38	2.4	40	1.15	62	45
CMP244DC	2.4m/8ft	4.4-5.0	38.0	38.8	39.3	2.0	40	1.15	63	45
CMP246WDC	2.4m/8ft	5.925-7.125	40.8	41.7	42.5	1.4	40	1.1	67	45
CMP247WDC	2.4m/8ft	7.125-8.5	42.5	43.3	44.0	1.1	40	1.1	69	45
CMP2410WDC	2.4m/8ft	10-11.7	45.5	46.1	46.8	0.8	40	1.1	71	45
CMP2413WDC	2.4m/8ft	12.2-13.25	47.5	47.7	47.9	0.7	40	1.1	72	45
CMP2415DC	2.4m/8ft	14.4-15.35	48.6	48.8	49.1	0.6	40	1.1	74	45

2.4m/8ft high XPD dual-polarized microwave parabolic antenna specification

Antenna Model	Antenna Size(m/ft)	Frequency (GHz)	Gain(dBi)			3dB BW (deg)	XPD (dB)	VSWR	F/B ratio (dB)	ISO
			Low	Mid	Top					
CMP243DB	2.4m/8ft	3.6-4.2	36.1	37.3	38	2.4	33	1.15	62	38
CMP244DB	2.4m/8ft	4.4-5.0	38.0	38.8	39.3	2.0	33	1.15	63	38
CMP246WDB	2.4m/8ft	5.925-7.125	40.8	41.7	42.5	1.4	33	1.1	67	38
CMP247WDB	2.4m/8ft	7.125-8.5	42.5	43.3	44.0	1.1	33	1.1	69	38
CMP2410WDB	2.4m/8ft	10-11.7	45.5	46.1	46.8	0.8	33	1.1	71	38
CMP2413WDB	2.4m/8ft	12.2-13.25	47.5	47.7	47.9	0.7	33	1.1	72	38
CMP2415DB	2.4m/8ft	14.4-15.35	48.6	48.8	49.1	0.6	33	1.1	74	38

2.4m/8ft standard dual-polarizedmicrowave parabolic antenna specification

Antenna Model	Antenna Size(m/ft)	Frequency (GHz)	Gain(dBi)			3dB BW (deg)	XPD (dB)	VSWR	F/B ratio (dB)	ISO
			Low	Mid	Top					
CMP243DA	2.4m/8ft	3.6-4.2	36.1	37.3	38	2.4	30	1.15	62	35
CMP244DA	2.4m/8ft	4.4-5.0	38.0	38.8	39.3	2.0	30	1.15	63	35
CMP246WDA	2.4m/8ft	5.925-7.125	40.8	41.7	42.5	1.4	30	1.1	67	35
CMP247WDA	2.4m/8ft	7.125-8.5	42.5	43.3	44.0	1.1	30	1.1	69	35
CMP2410WDA	2.4m/8ft	10-11.7	45.5	46.1	46.8	0.8	30	1.1	71	35
CMP2413WDA	2.4m/8ft	12.2-13.25	47.5	47.7	47.9	0.7	30	1.1	72	35

CMP2415DA	2.4m/8ft	14.4-15.35	48.6	48.8	49.1	0.6	30	1.1	74	35
-----------	----------	------------	------	------	------	-----	----	-----	----	----

Mechanical performance:

Diameter of Mounting Pole	Φ114 mm
Fine Azimuth Adjustment	Coarse 360° Fine ±5°
Fine Elevation Adjustment	Fine ±5°
Wind Velocity Operational	180km/h
Wind Velocity Survival	200km/h
Ice-load	25.4 mm
Operational Temperature	-55~ +70

1.The low/mid/high gain has≤-0.5dBi tolerance is within the normal range;

2.F/Bradio:Denotes highest radiation relative to the main beam,at 180°±40°,across the band.Production antennas do not exceed rated values by more than 2 dB unless stated otherwise;



Wuxi Famous Communication Equipment Co., Ltd.

+86 13255118228

eric@mw-antenna.com

mw-antenna.com

Room 803, Wisdom Building, No. 18 Wisdom Road, Huishan Economic Development Zone, Huishan District,
Wuxi City, Jiangsu Province, China